



Local Agency Formation Commission
2222 M Street
Merced, CA 95340
Phone (209) 385-7671 / Fax (209) 726-1710
www.lafcomerced.org

DATE: May 21, 2020 (Agenda)
TO: LAFCO Commissioners
FROM: ^{Bh} Bill Nicholson, Executive Officer
RE: Presentation Regarding the Proposed Formation of the "Owens Creek Water District"



Representatives of the proposed "Owens Creek Water District" (LAFCO File No. 0688), will be making a presentation to the Commission in anticipation of the future public hearing on the application by the Commission. Bruce Marlow, representing the 4-S Ranch will be making the presentation and has provided a briefing package which is included as an attachment to this memo.

The application involves the formation of a new 7,800 acre California Water District, the establishment of the proposed district's Sphere of Influence, and a corresponding amendment to the Merced Irrigation District Sphere of Influence by removing this territory from the current Sphere. Based on the application materials, the purpose of forming a new district is for the landowners to have a more direct role in groundwater sustainability planning in compliance with the Groundwater Sustainability Management Act (SGMA). Specifically in monitoring and reporting on groundwater conditions, maintaining and operating groundwater recharge basins, and storing and distributing surface water outside of the district.

As of date the agenda and packet for the May 21, 2020 Commission meeting was being mailed, the application materials are not yet complete and ready for processing. It is anticipated they will be submitted soon, and once deemed complete, referrals will be sent to various County and outside agencies, and a determination will be made as to the level of environmental review required in compliance with the California Environmental Quality Act (CEQA).

Action Required

This is an informational item at the applicant's request to give the Commission a preview of the Owens Creek Water District formation proposal before a public hearing is scheduled. No action is requested of the Commission.



May 2020

Owens Creek Water District

**A Nature-Based,
Environmentally Friendly,
Underground Surface Water
Storage Facility**



OwensCreek
Water District

Table of Contents

Table of Contents	1
Executive Summary	2
Maps & Figures.....	4
High Level Overview	4
Owens Creek Water District	5
Owens Creek Water District – Parcel Map	6
Owens Creek Water District – Water Sources.....	7
Owens Creek Water District – Well integration and discharge point	8
Owens Creek Water District – Gate Map	9
Central Valley Project Consolidated Place of Use	10
Merced GSA Map	11

Executive Summary

Owens Creek is a fully functional underground Surface Water Storage Facility. Strategically located South of the Delta and North of the San Luis Reservoir, the Owens Creek Water District can store Federal and State Water from the Northern Reservoirs along with water from Millerton Lake and Lake McClure. There are numerous Rivers that feed the Owens Creek Water District.



Owens Creek Water District 2017

- 7,800 acres – (0.6% of Merced County)
- “South of the Delta and North of the San Luis Reservoir”
- Excellent integration with the State and Federal water distribution system
- Privately developed - *“No Public funds have been used to develop the facility”*
- Storage Capacity - 432,000 to 504,000 acre feet (McGinley and Associates Water Source Report, May 2019)
- Extraction on demand from banking customers
- 18 wells. Most are interconnected
- Third Party well and data consistently monitored
- Water is stored above the Corcoran Clay, minimal subsidence
- Bureau of Reclamation endorses a Warren Act Contract to support banking customers
- Conveyance to the Delta Mendota Canal through West Stanislaus Irrigation District

- Supports Agricultural Water Districts in need of critical water supply
- Supports health of the aquifers including a 10% “leave behind”
- Stored water exceeds the water quality of the San Joaquin River
- Supports year-round health of the Refuges and Wildlife with additional waterfowl habitat adjacent to state and federal refuges.



Owens Creek Water District 2017

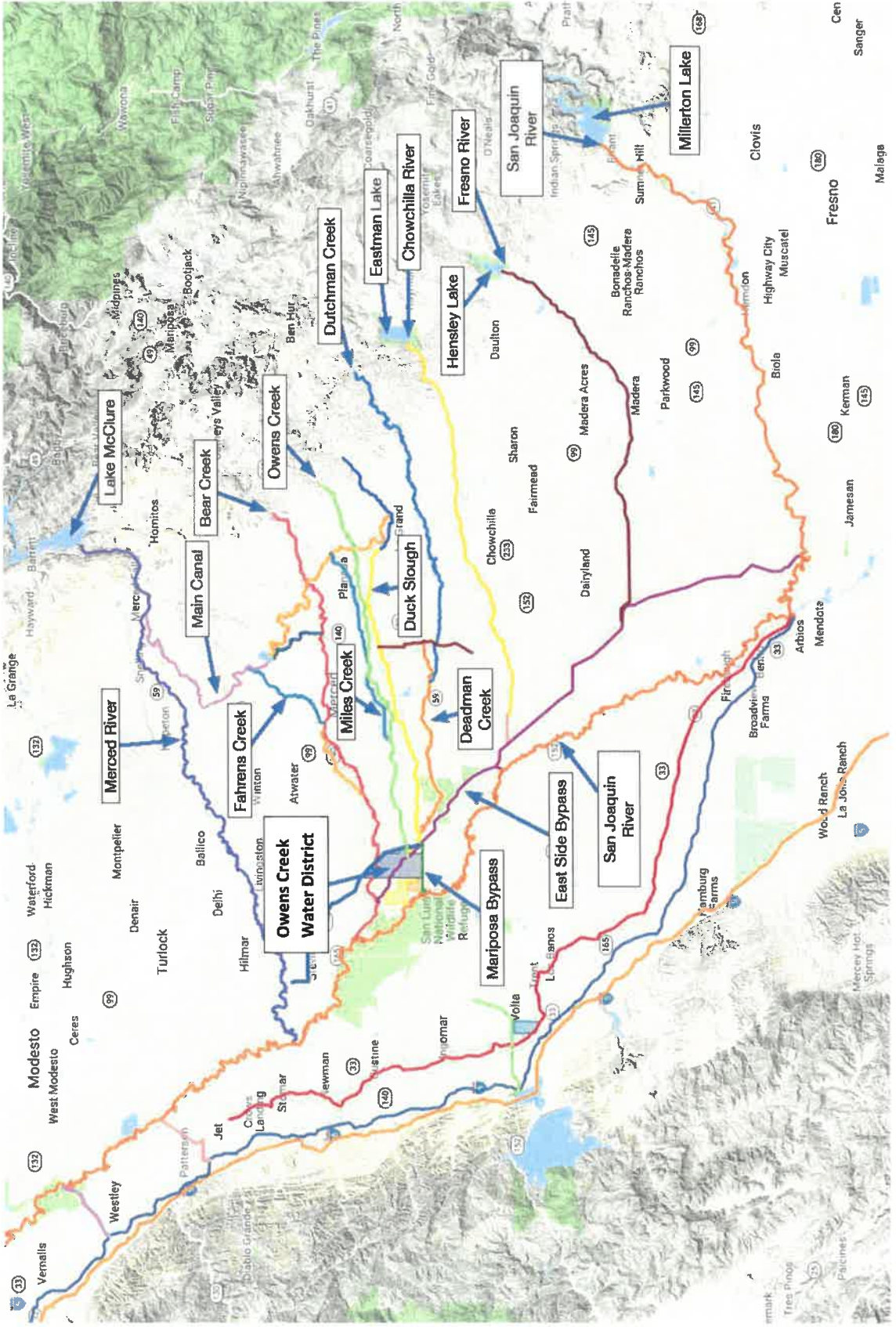


Owens Creek Water District 2017

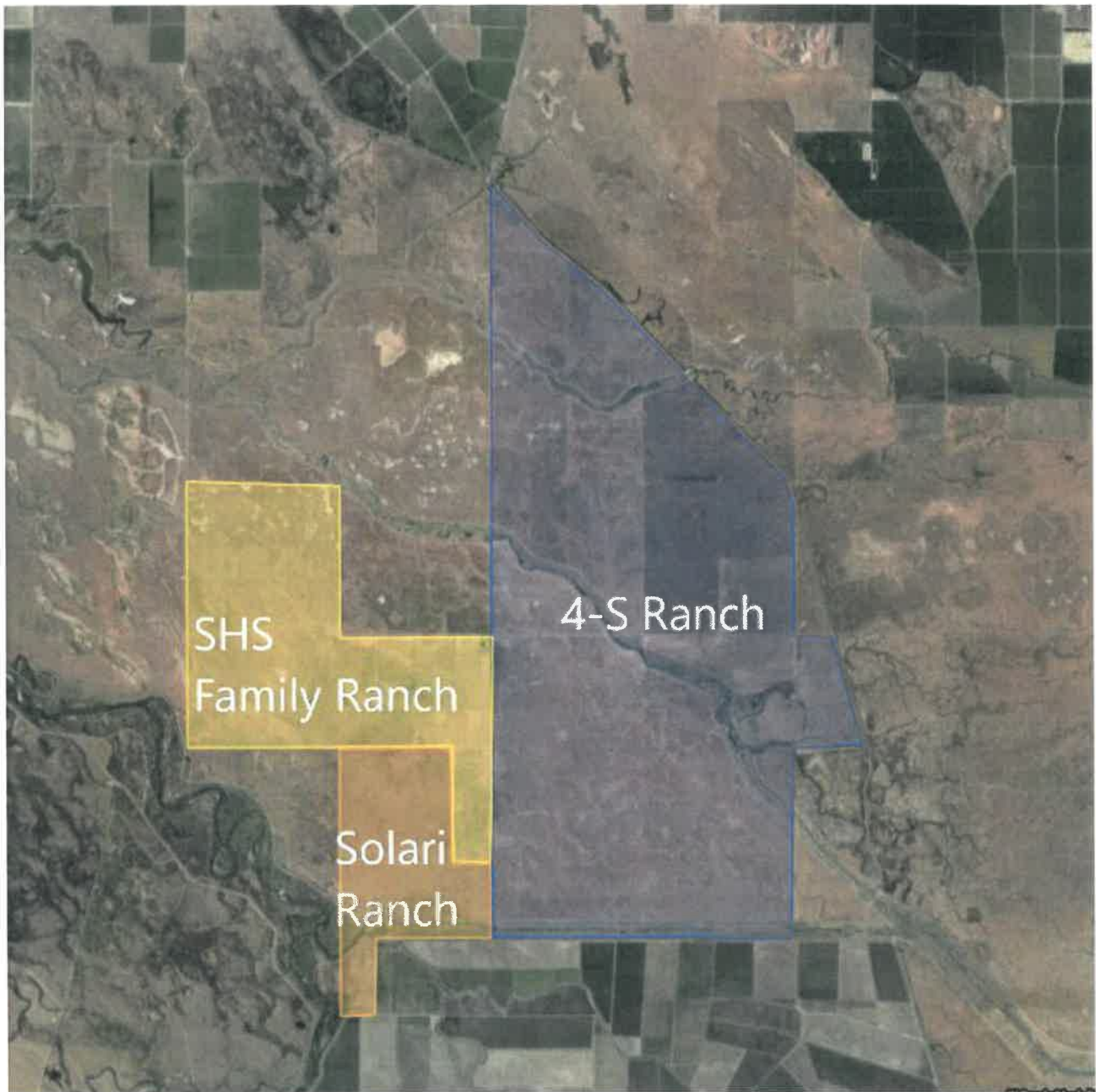
- Supports Salmon restoration flows
- Underground storage is safe from biological attack or a pandemic event
- No loss to evaporation
- Water supply is safe from the effects of an Earthquake.

Maps & Figures

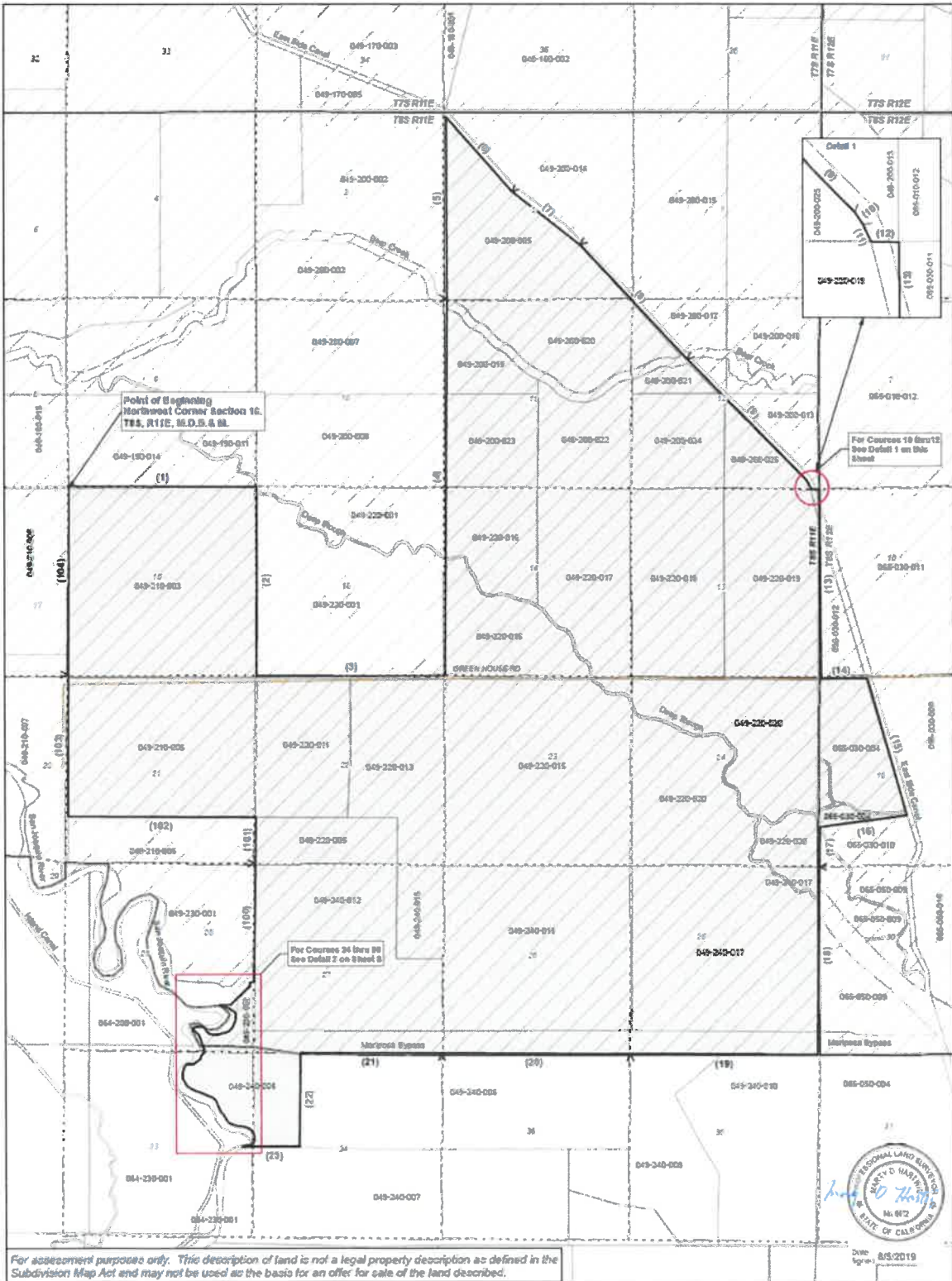
High Level Overview



Owens Creek Water District

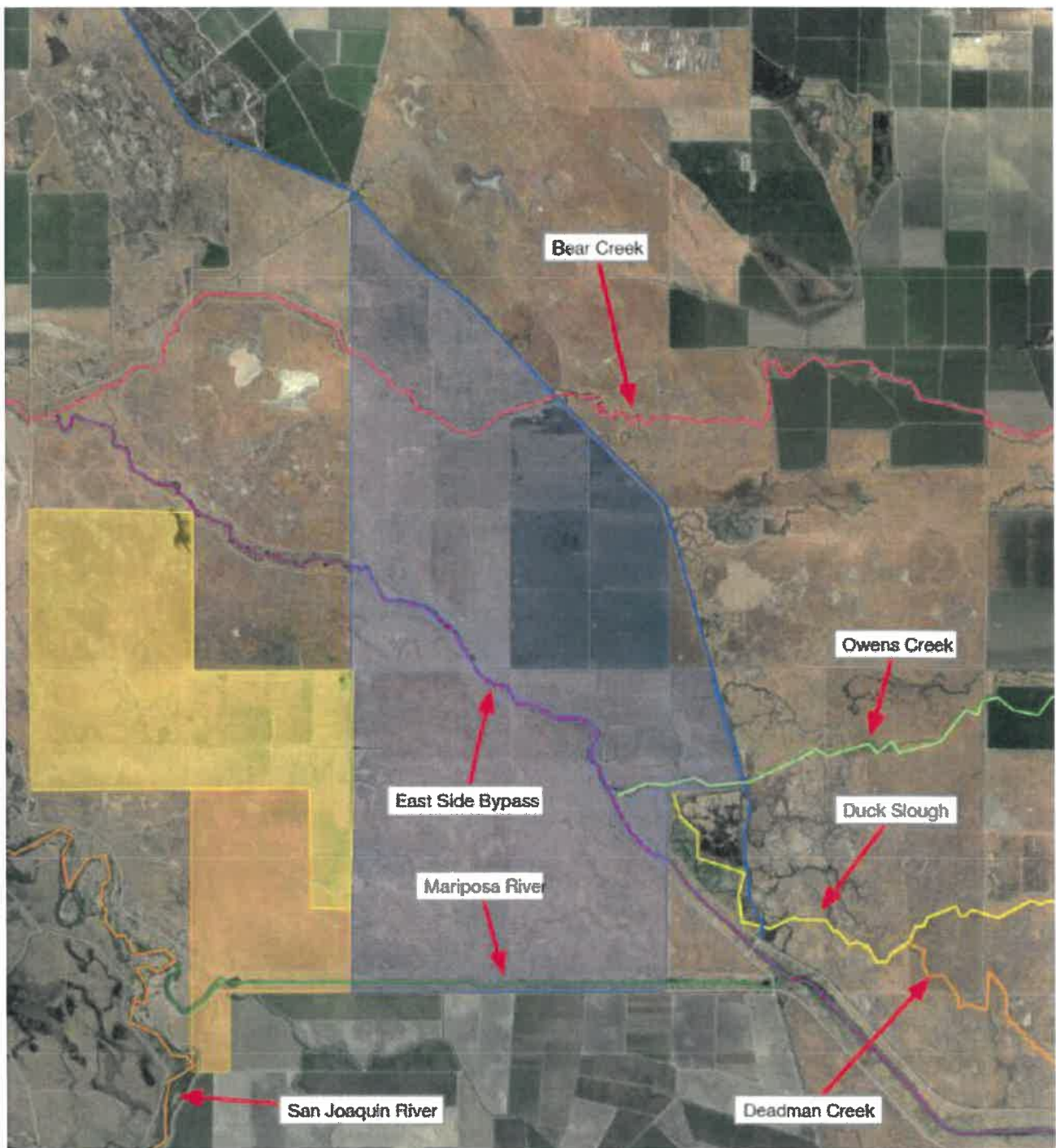


Owens Creek Water District – Parcel Map



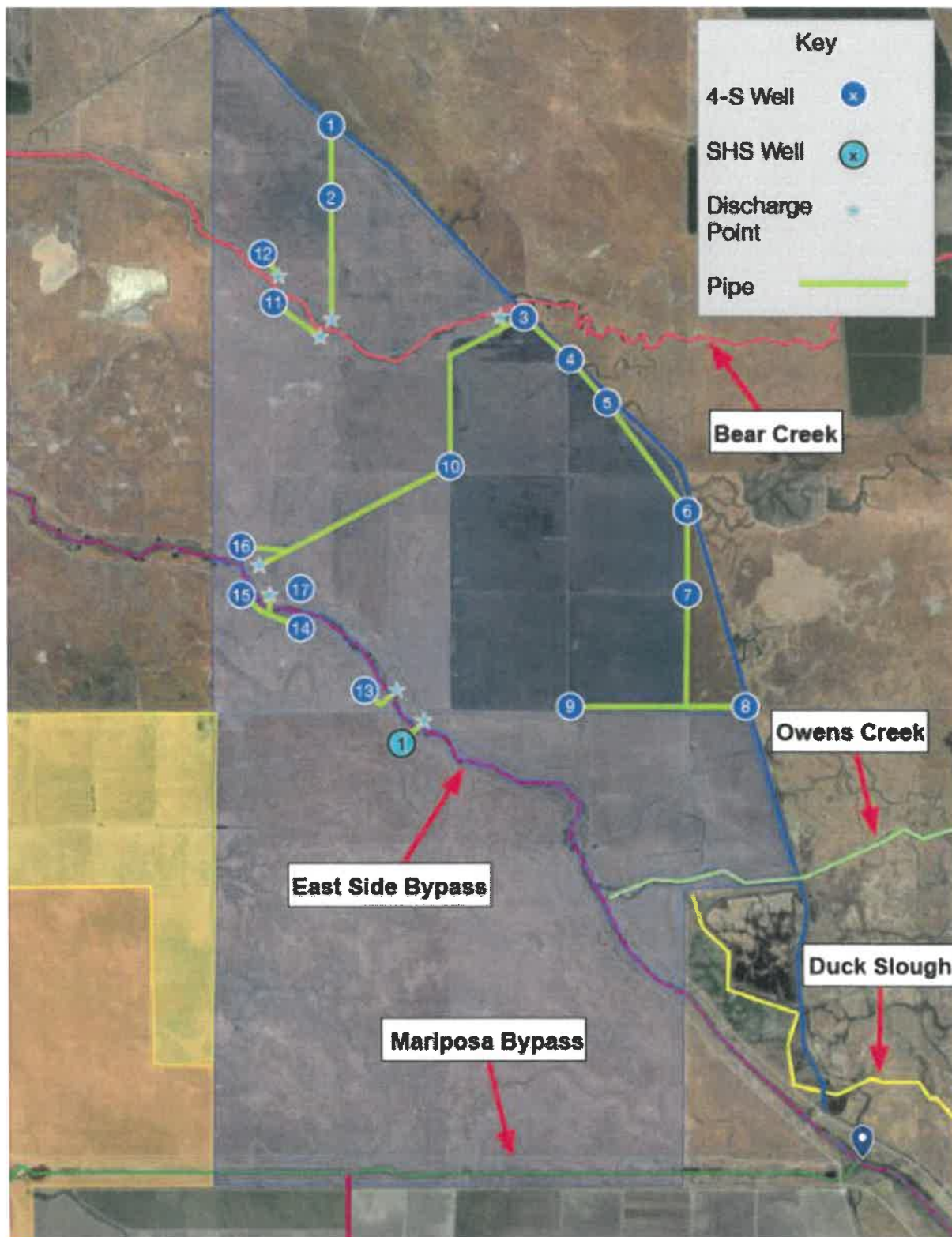
For assessment purposes only. This description of land is not a legal property description as defined in the Subdivision Map Act and may not be used as the basis for an offer for sale of the land described.

Owens Creek Water District – Water Sources



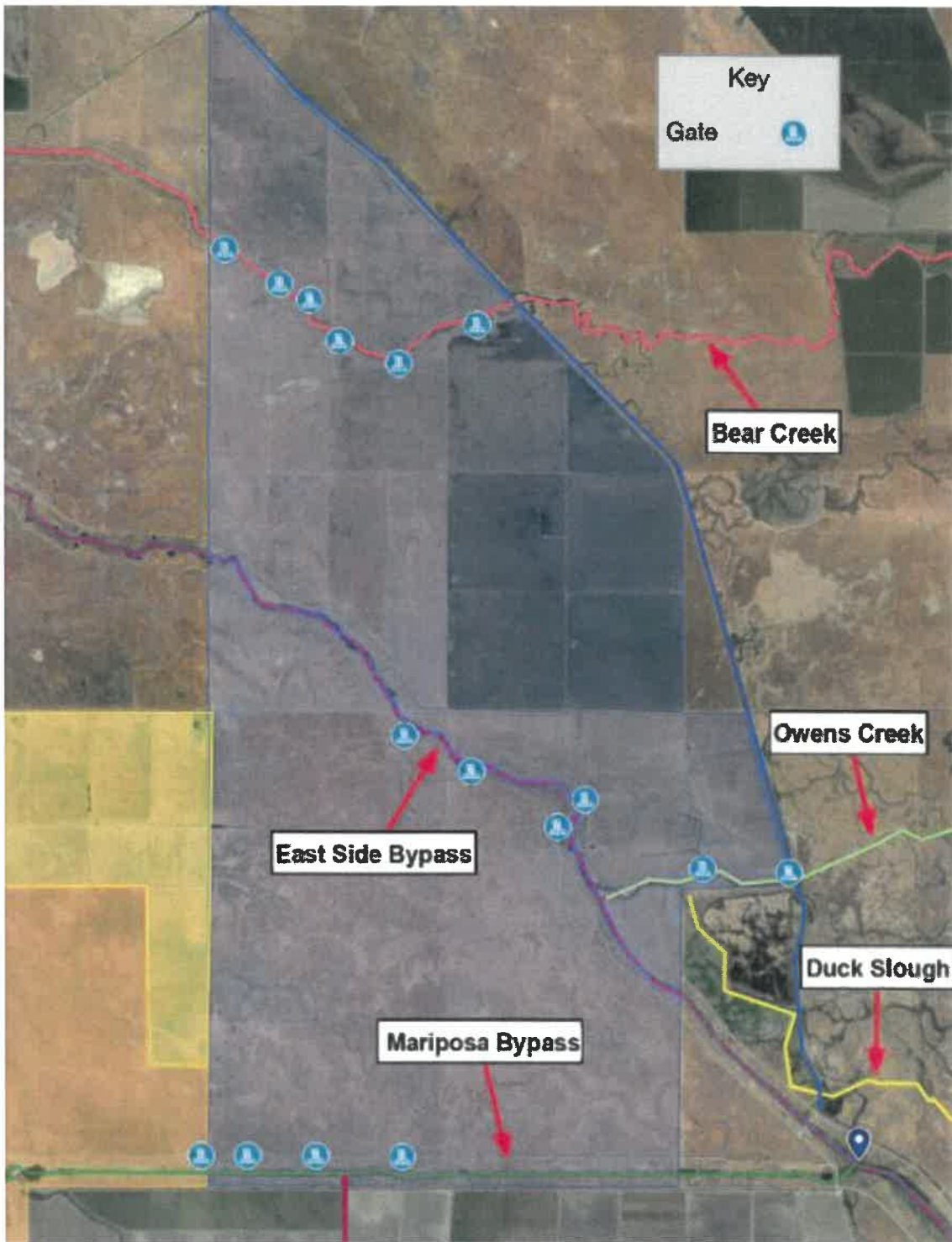
OwensCreek

Owens Creek Water District – Well integration and discharge point



OwensCreek

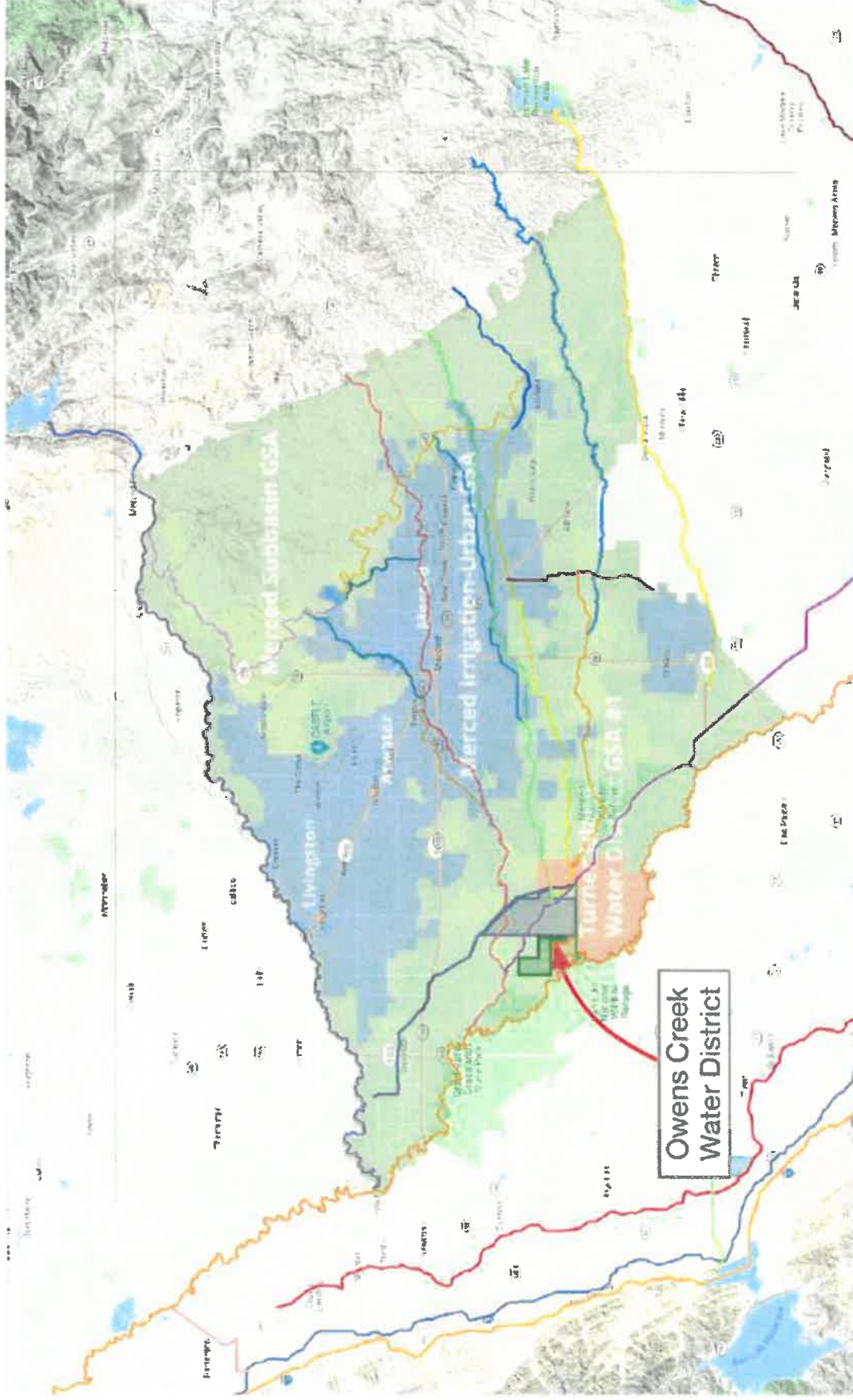
Owens Creek Water District – Gate Map



Central Valley Project Consolidated Place of Use



Merced GSA Map



OwensCreek